

HYDRA-Data Collection for SAP



- Capturing of clock-in and clock-out times
- Recording of quantities and times for production orders
- Upload of maintenance data
- Time recording for project orders
- Ergonomically operated terminals used for production data collection and time and attendance
- Certified interfaces to SAP HR, PP, PM and PS

SOFTWARE



PARTNER

HYDRA-Data Collection for SAP

Many companies plan and control their business processes with commercial, horizontal solutions of SAP. The efficiency of SAP systems depends largely upon the quality and topicality of the data to be processed. Subsystems, which are in the position to collect the required data from the areas production and HR and forward them to the SAP modules on time, provide for the necessary flow of information between the production and the management level.



Close collaboration with SAP

Within the scope of their Complementary Software Partner Program SAP cooperates with solution providers whose systems effectively complement and support the SAP functions.

Especially, manufacturing companies benefit from efficient subsystems that promptly record the necessary information from the areas production and HR and upload them to the SAP system via standardized interfaces.

MPDV has actively been contributing in the partner program of SAP AG for many years and has acquired extensive know how and substantial experiences in the SAP environment due to a broad variety of realized projects. Our inhouse SAP Competence Center supports our customers in optimally using the modules of our data collection system HYDRA in collaboration with the SAP functions and thus in closing the gap between the production processes and the management level. For the communication HYDRA uses interfaces, which correspond to the SAP conventions and are certified officially by SAP as a sign of their operability.

HYDRA as data collection system in the SAP environment

If SAP applications only need to be completed by current data, HYDRA is used as pure data collection system. The data transfer with the SAP system is based on the standardized interfaces to

- HR and PP via the interfaces HR-PDC and PP-PDC (as of SAP 4.6) or
- HR, PP, PM and PS via the communication channels KK1, KK2, KK3 and KK4 (PDC-CC1 ... CC4).

If required, the HYDRA data collection system can also be enlarged with complementary functions for SAP in terms of a Manufacturing Execution System (MES). Detailed information on this variant is described in a separate brochure.

The HYDRA-mySAP connector constitutes the core of the communication with the SAP system. It uses SAP standard technologies such as ALE or RFC and is also in the position to communicate with the NetWeaver. The HYDRA-mySAP connector assumes the complete control and monitoring of the SAP interfaces and thus guarantees the accurate, automated process of the data transfer.

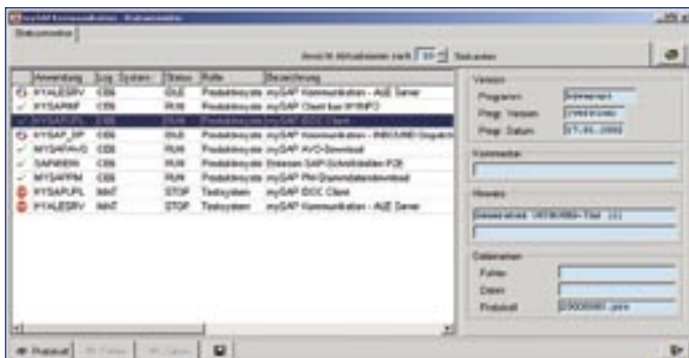
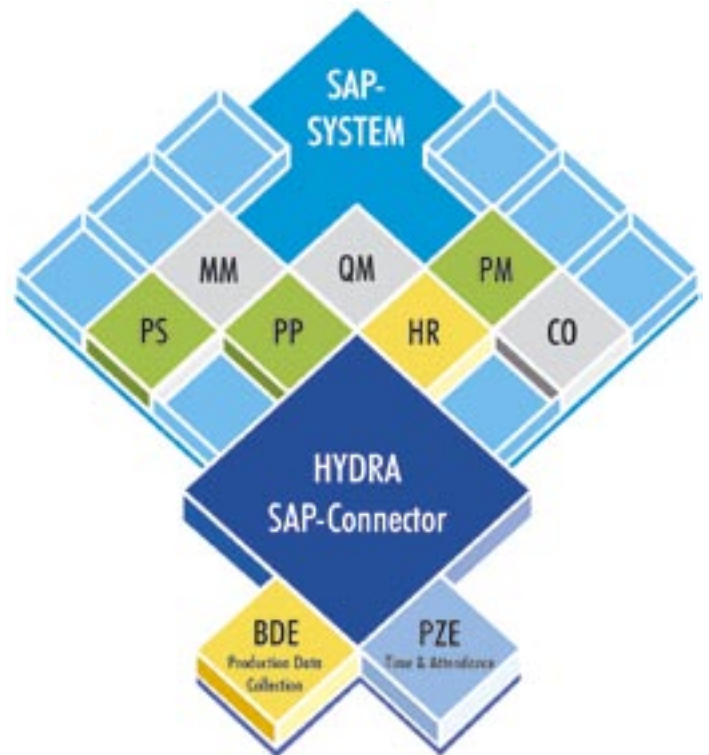


HYDRA-Data Collection for SAP

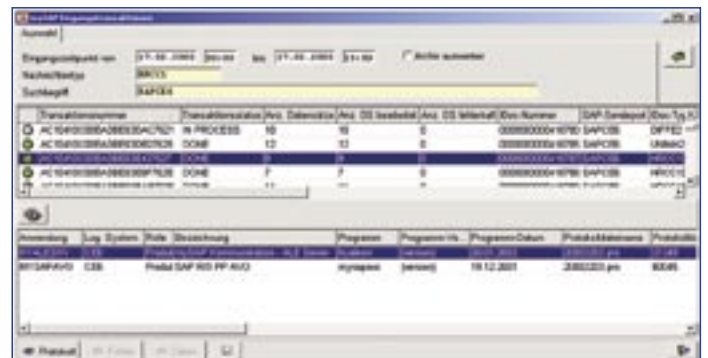
HYDRA implementation with plug and play

In its special configuration as certified data collection system, HYDRA enables the direct coupling of data collection terminals to the SAP modules HR, PP, PM and PS. As the master data is downloaded (initial and delta download), the maintenance of data can be done centrally in one system. HYDRA directly uploads the recorded actual data, which are checked for plausibility, via the interfaces HR-PDC or PP-PDC or the standardized communication channels KK1 to KK4 (PDC-CC1 ... CC4).

Your benefits: Plug and play solution with short implementing times, cheap standard software, effective provision of the SAP modules with the required actual data!



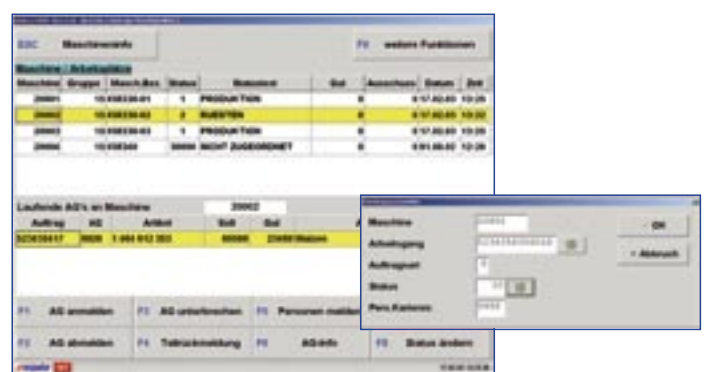
The HYDRA-mySAP-connector controls the data transfer via activated interfaces between HYDRA and the connected SAP systems.



The employees record the relevant order data via configurable and user-friendly dialogs to directly upload them to SAP PP, PM or PS. Entries are especially ergonomic and comfortable touch screen terminals.



The employees post their clock-in / clock-out times and record the necessary data of the processed production orders at ergonomically designed terminals that are optimally adapted to the respectively intended use.



The employees record the relevant order data via configurable and user-friendly dialogs to directly upload them to SAP PP, PM or PS. Entries are especially ergonomic and comfortable touch screen terminals.

HYDRA-Data Collection for SAP

Closer to the production with HYDRA

The acceptance and thus the efficiency of production-related systems depend largely upon how well the work of the machine operators, setters and foremen is supported. Future-oriented systems count on terminals that are compatible with PCs and that can also be used for further applications in the production environment such as quality control or DNC operations, if required.

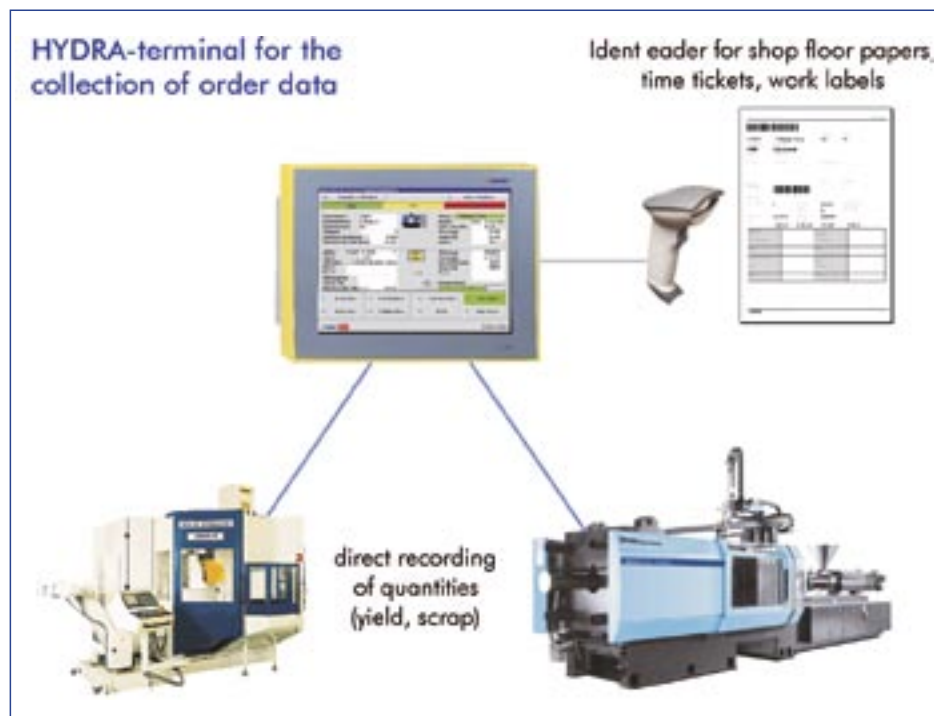
With practice-oriented functions and devices HYDRA offers the best requirements to be accepted by the employees within the production, soon. HYDRA data collection systems use terminals of the production data collection, industry PCs and other data collection devices, which can be operated ergonomically and for which the dialogs are designed as simply as possible in contrast to complex PC input masks. For a secure and effective entry of the data, bar code readers can be used for the scanning of time tickets, work labels or other accompanying documents.

Easy data collection

Alternatively, order data can be posted in a paperless way. HYDRA displays the pool of orders, downloaded from SAP, to the employee at the data collection terminal. The order to be logged on is selected from the order pool and can be activated directly at the push of a button.

HYDRA supports the common identification procedures for plant ID cards such as barcode, infrared, inductive, LEGIC, MIFARE and HITAG in order to render the collection of personal data (e.g. clock-in/clock-out times) as secure as possible. If increased security precautions are required, biometric identification such as finger prints can also be used.

Time & Attendance and access control



HYDRA terminals can also be installed for the collection of labor times in the foyers of office buildings and shop floors. If required, the terminals can also be used for access control. The access authorizations can optionally be adopted by SAP HR or created in HYDRA in detail.

HYDRA users can generally choose, whether they want to use data collection terminals of MPDV, devices of other manufacturers or even common PCs. The HYDRA software can be run on devices that are compatible with PCs. If a Local Area Network (LAN) does neither exist nor is planned, devices can also be connected via wireless LAN.

MPDV Mikrolab GmbH

Römerring 1
74821 Mosbach
Germany
Fon +49 (62 61) 9 20 9-0
info@mpdv.de · www.mpdv.de

MPDV Locations:

Mosbach · Hamburg · Hamm · Heidelberg ·
Munich · Stuttgart · Winterthur / CH ·
Amboise / F · Fort Mill / USA

© 2005 MPDV Mikrolab GmbH
Doku-Ident: PRSAPD-ENG 09/2005

The mentioned product names are trademarks of the respective producers or suppliers.
HYDRA® is an entered trademark of MPDV Mikrolab GmbH.